

# NEWS



Rapid information for our customer.

## Kits for temperature-controlled box bodies: Achieve optimal productivity!

The **insulated kits 250-2 to 257-2** are made from robust, rigid FerroFoam® panels and can be used to create durable structures for demanding customers. These kits are **certified according to ATP and EN 12642 XL** upon request.

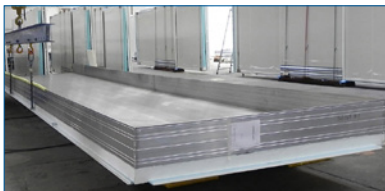


### for the most demanding requirements



- > insulated, **reinforced floors** connected by kickboards form a **watertight floor pan**.  
**Versions:** Anti-Slip, Rice Grain or Quiet Running.
- > walls made of robust **FerroFoam® panels**
- > stainless steel portals, glass bead blasted
- > partitions for **different temperature zones** are available

### low assembly costs



- > complete **floor assembly pre-assembled**, **empty conduits** foamed into the walls
- > **screw technology** instead of complex bonding
- > **reinforcements** in the roof/walls, **now with threaded holes for efficient cooling system installation**
- > **fully fitted options:** load securing/double-deck rails, lighting, rubbing strips, side doors

### durable and sustainable



- > **low weight** of FerroFoam® panels
- > coated panels instead of paintwork
- > manufactured in accordance with HACCP principles
- > **easy to repair** in the event of damage



**AluTeam Fahrzeugtechnik GmbH**  
Brockhagener Straße 88, D-33649 Bielefeld  
☎ +49 (0) 521 - 41 73 11 - 0  
✉ info@aluteam.de 🌐 [www.aluteam.de](http://www.aluteam.de)

**AluTeam Fahrzeugtechnik Wolfhagen GmbH**  
Hans-Böckler-Straße 4, D-34466 Wolfhagen  
☎ +49 (0) 56 92 - 609 - 0  
✉ wolfhagen@aluteam.de 🌐 [www.aluteam.de](http://www.aluteam.de)

